

CERTIFICATE OF LOCATION OF GOVERNMENT CORNER

North Quarter Corner of Section 8, Township 108, Range 41, 5TH P.M.

STATE OF MINNESOTA, County of Murray

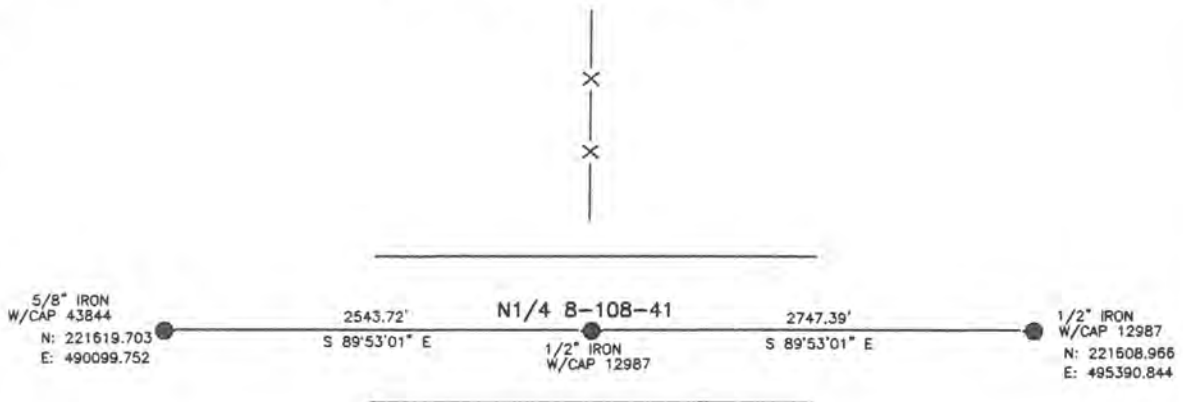
At the corner location shown on the sketch:

On Jan 4, 2019 found a iron monument with seal no. 12967
DATE

left monument as found, lowered monument, removed monument (explain)

On _____ placed a _____
DATE

SKETCH OF REFERENCE TIES



Minnesota State Plane Coordinate
System Murray County Datum
NAD83 (1996)

N: 221614.541
E: 492643.463

Statement of evidence relative to this corner location is on back of page.

I hereby certify that this document and the data contained herein was prepared by me or under my direct supervision.

Daniel L. Bueltel
License No. 43844

1/22/2019
DATE

STATE OF MINNESOTA, } ss.
COUNTY OF MURRAY, }

I hereby certify that the within Instrument was filed in this office for record on the 5TH day of FEBRUARY A.D. 20 19 at 9:00 o'clock A. M. and was duly recorded as Document No. _____

Lucy C. Larson
County Recorder

Statement of Evidence

N1/4 8-108-41

In 1861, L.M. Fletcher did the original survey of the township.

January 19, 1987, Gary Martin shows a found iron monument on survey.

January 4, 2019, Buetlel-Moseng Land Surveying found an iron monument with seal no. 12967 in centerline of road and in line with fence to the north.